

More Precision.



optris® CT laser F2 / F6

Non-contact temperature measurement of CO₂ and CO flame gases from 200°C to 1450°C



FEATURES

- Accurate temperature measurement of CO₂ or CO flame gases in the range of 200°C up to 1450°C in combustion processes, garbage burning or processes inside chemical reactors
- Double laser aiming marks real spot location and spot size up from 1.6 mm at any distance
- Usable in all modern applications where “size of spot matters”
- Optics 45:1 with selectable focus
- Usable up to 85°C ambient temperature without cooling and automatic laser switch off at 50°C
- Cooling and protection accessories for harsh environmental conditions

General specifications	
Environmental rating	IP 65 (NEMA-4)
Ambient temperature	sensing head: -20 - 85°C (50°C with laser ON) electronics: 0 - 85°C
Storage temperature	sensing head: -40 - 85°C electronics: -40 - 85°C
Relative humidity	10 - 95%, non condensing
Vibration (sensor)	IEC 68-2-6: 3 G, 11 - 200 Hz, any axis
Shock (sensor)	IEC 68-2-27: 50 G, 11 ms, any axis
Weight	sensing head 600 g electronics 420 g
Electrical specifications	
Outputs/analog	channel 1: 0/4 - 20 mA, 0 - 5/10 V, thermocouple J, K channel 2: sensing head temperature (-20 - 85°C as 0 - 5 V or 0 - 10 V), alarm output
Alarm output	Open - collector (24V / 50mA)
Optional:	relay: 2 x 60 V DC/42 V AC _{eff} ; 0.4 A; optically isolated
Outputs/digital (optional)	USB, RS232, RS485, CAN, Profibus DP, Ethernet
Output impedances	mA max. 500Ω (with 8 - 36 V DC) mV min. 100 kΩ load impedance thermocouple 20Ω
Inputs	programmable functional inputs for external emissivity adjustment, ambient temperature compensation, trigger (reset of hold functions)
Cable length	3 m (standard), 8 m, 15 m
Current draw	max. 160 mA
Power supply	8 - 36 V DC
Laser 635 nm	1mW, ON/OFF via electronic box or software

Measurement specifications	
Temperature range (scalable via programming keys or software)	200 - 1450°C
Spectral ranges	4.24 μm (F2 / CO ₂)
	4.64 μm (F6 / CO)
Optical resolution (90 % energy)	45:1
Selectable focus	CF1 1.6 mm @ 70 mm
	CF2 3.4 mm @ 150 mm
	CF3 4.5 mm @ 200 mm
	CF4 10 mm @ 450 mm
	SF 27 mm @ 1200 mm
System accuracy ¹⁾ (at ambient temperature 23 ±5°C)	±1% ²⁾
Repeatability (at ambient temperature 23 ±5°C)	±0.5 % or ±0.5°C ²⁾
Temperature resolution	0.1°C
Response time ³⁾ (90 % signal)	10 ms
Emissivity/Gain (adjustable via programming keys or software)	0.100 - 1.100
Transmissivity/Gain (adjustable via programming keys or software)	0.100 - 1.000
ε Signal processing (parameter adjustable via programming keys or software, respectively)	peak hold, valley hold, average; extended hold function with threshold and hysteresis

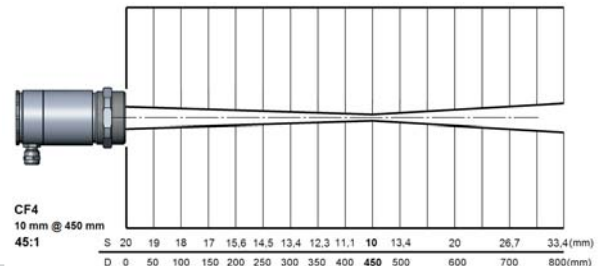
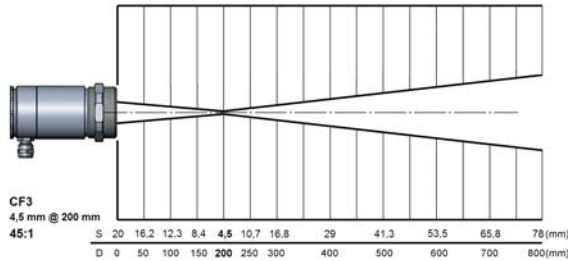
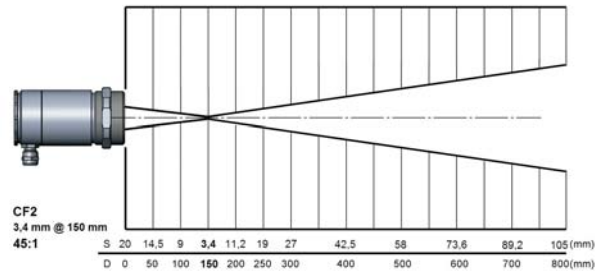
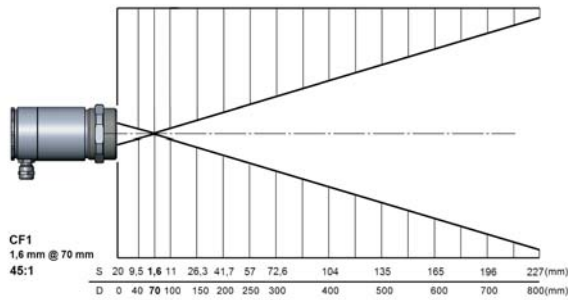
¹⁾ = 1, response time 1s

²⁾ for object temperatures above 300°C

³⁾ with dynamic adaption at low signal levels

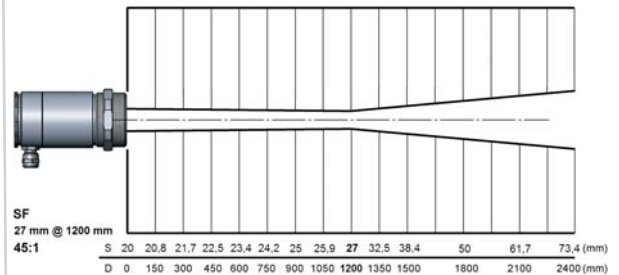
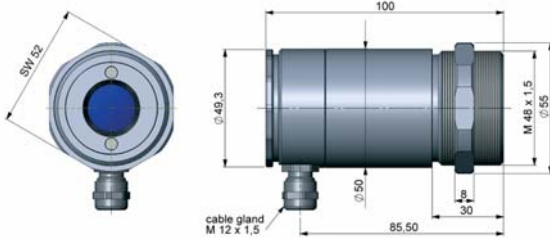
optris® CT laser F2 / F6

Optical specifications

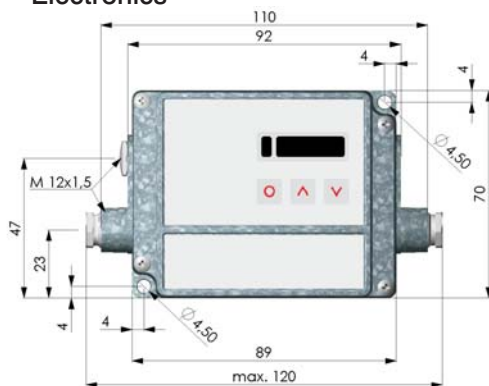


Dimensions

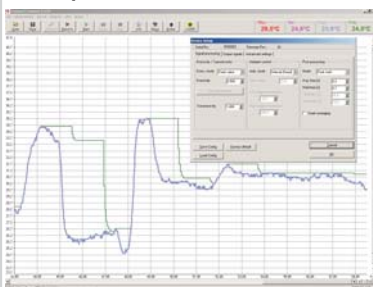
Sensing head



Electronics



CompactConnect Software



- Software for easy sensor setup and remote controlling, supports multi tasking
- Graphic display for temperature trends and automatic data logging for analysis and documentation with 1 ms response time
- Adjustment of signal processing functions and programming of outputs and functional inputs of the sensor
- Automatic emissivity adjustment
- The software CompactConnect allows to customize the sensor to application needs of the user